



WALTER A. TILLIT, JR., P.E.

tilteco@aol.com
FL P.E. License No. 44167
FL C.A. License No. 0006719

PRODUCT EVALUATION REPORT

REPORT No.: 22-0331.03

DATE: March 31, 2022

PRODUCT CATEGORY: Exterior Doors

PRODUCT SUB-CATEGORY: Sliding Exterior Door Assemblies

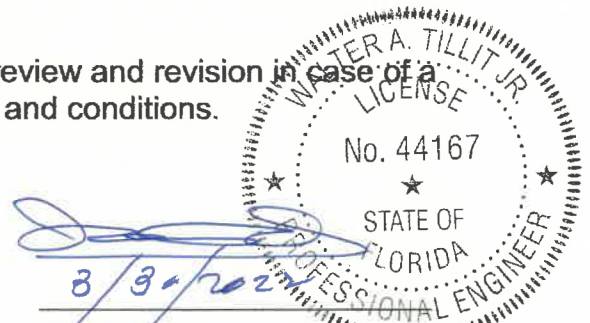
PRODUCT NAME: **SERIES 26000 HIGH IMPACT SLIDING
GLASS DOOR LARGE & SMALL
MISSILE**

1. PURPOSE OF EVALUATION:

This is a Product Evaluation Report issued by **Walter A. Tillit, Jr., P.E.**
(System ID # 1906) based on **Rule Chapter No. 61G20-3,
Method 1D of the Florida Department of Business and Professional
Regulation.**

This product is being issued an Evaluation Report as described herein and has been verified for compliance in accordance with the 2020 Seventh Edition of the Florida Building Code, and to verify that the product is for the purpose intended at least equivalent to that required by the Code.

This Product Evaluation Report shall be subject to review and revision in case of a Building Code change that may affect its limitations and conditions.



2. EVIDENCE SUBMITTED:

2.1. PRODUCT EVALUATION DOCUMENT (P.E.D.):

Drawing No. 22-021, titled “**SERIES 26000 HIGH IMPACT SLIDING GLASS DOOR LARGE & SMALL MISSILE**” sheets 1 thru 30 of 34 prepared by **Tilteco, Inc.**; signed and sealed by **Walter A. Tillit, Jr., P.E.**; dated **03/31/2022** This drawing is an integral part of this Evaluation Report.

2.2. TEST REPORTS:

Impact and Cyclic Tests as per protocol TAS-201, TAS-203, Uniform Static Load as per Protocol TAS 202 per sections 1626 and 1609.1.2, respectively of the Florida Building Code.

Test reports prepared by Fenestration Testing Lab Inc., Report No.11026 & 12031, signed and sealed by Idalmis Ortega, P.E.

2.3. STRUCTURAL ENGINEERING CALCULATIONS:

On Series 26000 High Impact Sliding Glass Door Large & Small Missile for Maximum Pressure Rating vs. Maximum anchor spacing, maximum width and height, and Maximum Glass Size, based on rational and comparative analysis, in accordance with sections 1604 and 1616 of the Florida Building Code. Calculations prepared by Tilteco, Inc., dated 02/05/2020, 03/27/2017, and 05/11/2020 signed and sealed by Walter A. Tillit, Jr., P.E.

3. MISSILE IMPACT RESISTANCE:

Large and Small Missile Impact resistance is provided per TAS 201, as applicable.

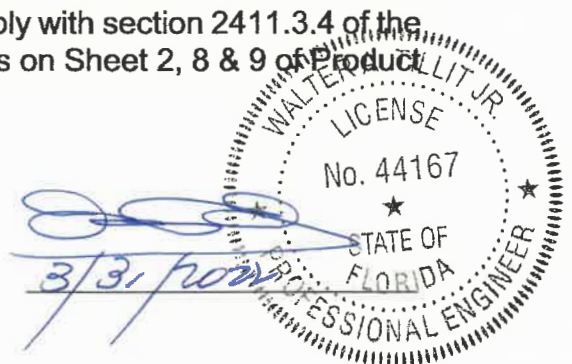
4. WIND LOADS RESISTANCE:

On Series 26000 High Impact Sliding Glass Door Large & Small Missile has been verified to keep sustain wind pressures. Maximum Glass Panel Dimensions, door width and height shall be indicated on sheet 7 and 25 thru 27 of Product Evaluation Document (P.E.D.), Drawing No. **22-021**.

5. INSTALLATION:

Installation shall be performed strictly in accordance with General Notes # 4 thru 11, indicated on sheet 1 and details indicated on sheets 5, 6 as well as 19 thru 24, 29 of Product Evaluation Document (P.E.D.), drawing No. **22-021**.

Gaskets and setting blocks used at installations comply with section 2411.3.4 of the Florida Building Code as specified on Bill of Materials on Sheet 2, 8 & 9 of Product Evaluation Document (P.E.D.), drawing No. **22-021**.



6. MATERIAL CHARACTERISTICS AND SPECIFICATIONS:

Shall be strictly in accordance with General Notes and Components indicated on sheets 1 thru 5, of Product Evaluation Document (P.E.D.), **Drawing No. 22-021.**

Anchor specifications shall be as indicated on sheets 1, of Product Evaluation Document (P.E.D.), Drawing No. **22-021** Max anchor spacing shall be as indicated on sheet 5, 6, and 28, 29 of Product Evaluation Document (P.E.D), Drawing No. **22-021.**

7. LIMITATIONS AND CONDITIONS OF USE:

7.1. Shall be strictly in compliance with General Notes No. 1 thru 5, indicated on sheet 1 of Product Evaluation Document (P.E.D.), Drawing No. **22-021** prepared by Tilteco, Inc. and signed and sealed by Walter A. Tillit, Jr., P.E.

7.2. Product **may** be installed within HIGH VELOCITY HURRICANE ZONES as defined on section 202 of the Florida Building Code and out of it.

7.3. Product shall only be installed into substrates with limitations as indicated on sheets 27 thru 34 of Product Evaluation Document (P.E.D.), Drawing No. **22-021.**

Product Evaluation Report prepared by Walter A. Tillit, Jr., P.E. (Florida License No. 44167), President of Tilteco, Inc. (Florida CA-0026719).

WATvna
D:\TILTECO ADMIN. RECORDS \ P. E. REPORT.22 \ MIAMI DADE ALUMINUM, CORP \ SERIES 26000 HIGH IMPACT SLIDING GLASS DOOR LARGE & SMALL MISSILE\ DRWG # 22-021 \ REPORT # 22-0331.03

