



WALTER A. TILLIT, JR., P.E.

PRODUCT EVALUATION REPORT

tilteco@aol.com
FL P.E. License No. 44167
FL C.A. License No. 0006719

REPORT No.: 22-0328.01

DATE: March 28, 2022

PRODUCT CATEGORY: Structural Components

PRODUCT SUB-CATEGORY: Product Introduced as A Result of New Technology

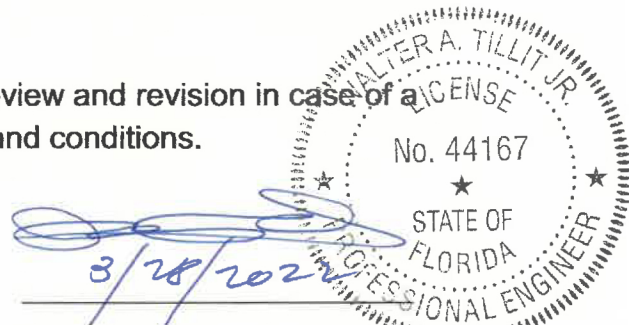
PRODUCT NAME: SERIES 14000 IMPACT RESISTANT
CLIPPED ALUMINUM MULLIONS

1. PURPOSE OF EVALUATION:

This is a Product Evaluation Report issued by **Walter A. Tillit, Jr., P.E.**
(System ID # 1906) based on **Rule Chapter No. 61G20-3,**
Method 1D of the Florida Department of Business and Professional
Regulation.

This product is being issued an Evaluation Report as described herein and has been verified for compliance in accordance with the 2020 Seventh Edition of the Florida Building Code, and to verify that the product is for the purpose intended at least equivalent to that required by the Code.

This Product Evaluation Report shall be subject to review and revision in case of a Building Code change that may affect its limitations and conditions.



2. EVIDENCE SUBMITTED:

2.1. PRODUCT EVALUATION DOCUMENT (P.E.D.):

Drawing No. 22-016, titled "SERIES 14000 IMPACT RESISTANT CLIPPED ALUMINUM MULLIONS" sheets 1 thru 60 of 60 prepared by Tiltco, Inc.; signed and sealed by Walter A. Tillit, Jr., P.E.; dated 03/28/2022. This drawing is an integral part of this Evaluation Report.

2.2. TEST REPORTS:

Impact and Cyclic Tests as per protocol TAS-201, TAS-203, Uniform Static Load as per Protocol TAS 202 per sections 1626 and 1609.1.2, respectively of the Florida Building Code.

Test reports prepared by Fenestration Testing Lab Inc., Report No.7553, signed and sealed by Marlin D. Brinson, P.E.

2.3. STRUCTURAL ENGINEERING CALCULATIONS:

On Series 14000 IMPACT RESISTANT CLIPPED ALUMINUM MULLIONS for Maximum Pressure Rating vs. Maximum mullion length and tributary width, based on rational and comparative analysis, in accordance with sections 1604 and 1616 of the Florida Building Code. Calculations prepared by Tiltco, Inc., dated 08/25/2017 and 5/02/2013, signed and sealed by Walter A. Tillit, Jr., P.E.

3. MISSILE IMPACT RESISTANCE:


Large Missile Impact resistance is provided per TAS 201 (9 lbs., 50 feet/sec, Large Missile).

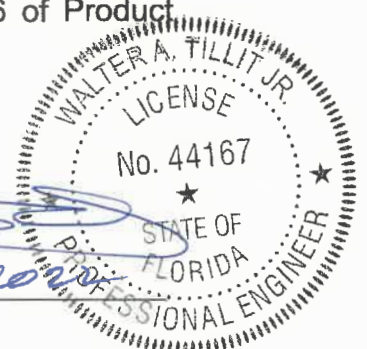
4. WIND LOADS RESISTANCE:

On Series 14000 IMPACT RESISTANT CLIPPED ALUMINUM MULLIONS has been verified to keep sustain wind pressures. Maximum mullion length and tributary width shall be as indicated on sheets 7 thru 60 of Product Evaluation Document (P.E.D.), Drawing No. 22-016.

5. INSTALLATION:

Installation shall be performed strictly in accordance with General Notes # 3 thru 11, indicated on sheet 1 and details indicated on sheets 2,4,5 & 6 of Product Evaluation Document (P.E.D.), drawing No. 22-016


3/28/2022



WALTER A. TILLIT JR.
LICENSE
No. 44167
STATE OF
FLORIDA
PROFESSIONAL ENGINEER

6. MATERIAL CHARACTERISTICS AND SPECIFICATIONS:

Shall be strictly in accordance with General Notes and Components indicated on sheets 3 and 4, of Product Evaluation Document (P.E.D.), **Drawing No. 22-016.**

Anchor specifications shall be as indicated on sheet 1, of Product Evaluation Document (P.E.D.), Drawing No. **22-016.** Anchor layout at clips shall be as per sheet 5 of P.E.D. No **22-016.**

7. LIMITATIONS AND CONDITIONS OF USE:

7.1. Shall be strictly in compliance with General Notes No. 1 thru 5, indicated on sheet 1 of Product Evaluation Document (P.E.D.), Drawing No. **22-016** prepared by Tilteco, Inc. and signed and sealed by Walter A. Tillit, Jr., P.E.

7.2. Product **may** be installed within HIGH VELOCITY HURRICANE ZONES as defined on section 202 of the Florida Building Code and out of it.

7.3. Product shall only be installed into substrates with limitations as indicated on sheets 2 and 7 thru 60 of Product Evaluation Document (P.E.D.), Drawing No. **22-016.**

Product Evaluation Report prepared by Walter A. Tillit, Jr., P.E. (Florida License No. 44167), President of Tilteco, Inc. (Florida CA-0026719).

WAT\ma

D:\TILTECO ADMON RECORDS\ P. E. REPORT.22\ MIAMI DADE ALUMINUM CORPORATION\ SERIES 14000 IMPACT RESISTANT CLIPPED ALUMINUM MULLIONS\ DRWG # 22-016\ REPORT # 22-0328.01.

